

Apollo Turbo HD



100% Quality Assurance for
Wide Web Packaging Applications

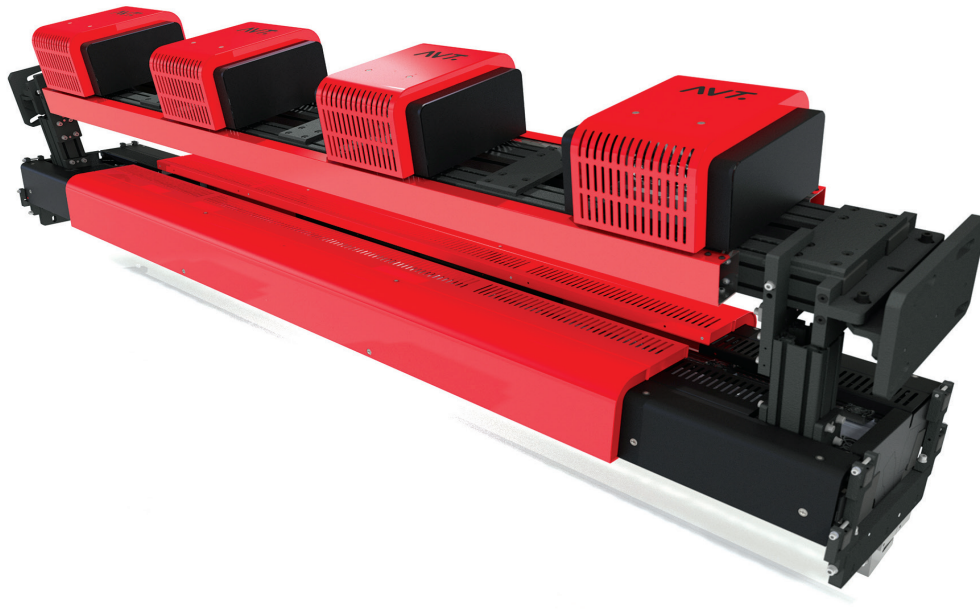


Packaging

When it comes to guaranteeing the quality and control of your wide web packaging production, AVT's Apollo Turbo HD delivers. Installed on press or finishing, Apollo Turbo HD provides high resolution and performance at any given web width, with resolution ranging from 8K to 16K – delivering quality levels that cannot be matched with any other system!



100% Quality Assurance Guaranteed!



The AVT Apollo Turbo HD is a superior automatic 100% quality assurance system for wide web packaging applications. Designed exclusively for press and post-press, Apollo Turbo HD visually inspects a range of printed materials, including transparent, flexible or reflective substrates commonly used in the packaging industry, efficiently and automatically detecting imperfections in real-time.

What's unique about the system is that it can be installed on a press for online quality assurance and process control, or alternatively, be integrated into rewinder/finishing equipment to create a combined Automatic Inspection Station.

Apollo Turbo HD automatically detects print defects, including color variations, doctor blade streaks, misprints, low contrast defects, mis-registration, spots, splashes and more.

Once installed and deployed on a laminator, the system effectively detects common lamination errors, such as glue misprint, material folding or air bubbles.

Simple to install and deploy, Apollo Turbo HD visually indicates the exact location and type of each defect and in parallel, records all relevant defect data into roll reports. An easy to view color-coded light tower informs operators when a defect is detected, so that errors can be addressed and corrected in real-time. The system's self-generated reports enable easy tracking of the marked defects during the finishing process, resulting in 100% guaranteed quality assurance on every print job.

Control Any Substrate/Application

- Flexible, transparent and opaque films
- Laminated materials
- Cartons
- Paper
- Foil and reflective materials (optional)

Speed & Productivity

- From zero to any speed in record time; quick/easy set-up, deployment and turnaround time
- User-friendly, operator-oriented system, minimal training required
- Intuitive, Wizard-guided process flow
- Fast and easy integration/ deployment into production process

Added Value

- Enhance overall print process and product quality
- Reduce waste, resources and production costs
- Generate new customers and business opportunities
- Gain a real competitive edge and industry leadership

Production Workflow, Archiving & Reporting: Your Competitive Edge!

Apollo Turbo HD raises the bar on your on-press and post-press production workflow. Equipped with an innovative built-in PrintFlow module, the system effectively handles job and data archiving and reporting.

An integral part of production workflow, operators use in-line reporting to review job/order/roll reports, edit and export final reports to digital files, or use the AVT WorkFlow Link to automatically connect to rewinders or slitters and efficiently

improve defective material before shipment. Quality reports with detailed defect images help operators identify problem areas, and more importantly, assist in the decision-making process to enhance production and deliver quality print jobs.

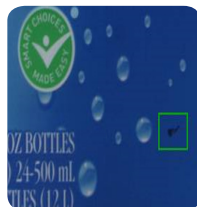
The system's PrintFlow Manager collects relevant data from multiple systems, so that managers and key personnel can easily monitor, analyze and control production quality from their desktop PCs.



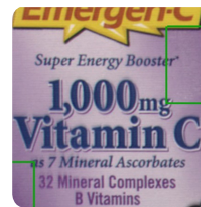
Streaks



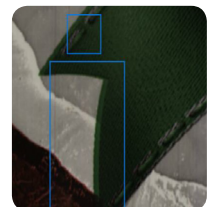
Foreign objects



Spots & Splashes



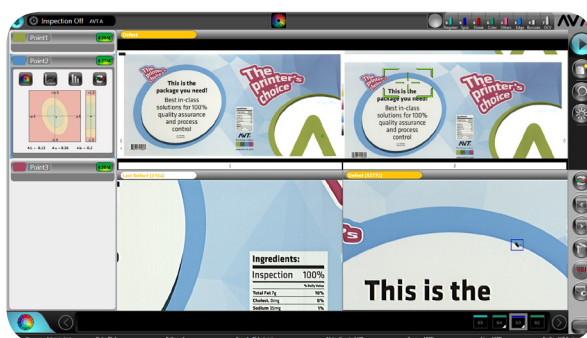
Color variation



Mis-registration

Built-in System Features

- PrintFlow – Built-in module enables automatic job data archiving and SQL-based roll/job reporting, including defect location, images and print-quality statistics
- Powerful, built-in, on-line monitoring of “good to ship” material, ensuring sufficient good material is printed prior to next job change
- Easily-generated inspection profiles result in fast set-up and improved quality control standards
- Regions of Interest (ROI) – Sets various sensitivities/profiles to different package areas, providing enhanced detection in important areas, or reduced sensitivity in less critical areas
- Quick Set – Fast, automatic “zero set-up” time for repeating jobs



Simple, easy-to-use application



Intuitive sensitivity classification & control

Supports every step of your production workflow

On-Press – Automatic early defect detection during the printing process

Doctor Machine – Trace and remove defective sections before the costly lamination process

Lamination Machine – Trace and mark lamination defects for removal during slitting

Slitter/Rewinder – Ensure that only fault-free material is delivered to customers

Optional Modules

lΔEal

In-line Delta E color measurements anywhere on the image, performed during and in parallel to print inspection, displays graphical view of color differences and reports statistics

MasteRef

Enables printers to save master image of each job, later used to verify that repeat jobs are identical to the original to prevent production errors and reduce waste

JobRef

Enables verification at the set-up stage, automatically comparing the job to the original, customer-approved digital PDF file

RLT (Repeat Length Trend)

Enables monitoring/alerts on repeat trend changes

WorkFlow Link

Transfers quality data from the press to the rewinder for efficient removal of defective material; automatically stops rewinder at the defect location

PrintFlow Manager

Collects PrintFlow data from all PrintVision platforms with easy, remote access for managers/key personnel from their desktop PCs

PrintFlow Central

Central automatic storage of job data and roll reports; supports central backup of all data, enabling continuous availability of inspection data for PrintFlow Manager/Workflow Link

Digimask

Deploys PDF die-cut line to mask-out irrelevant area bordering the package

Reflective Support

Enables inspection/detection of defects on all reflective materials and inks; maintaining same high-quality standards for diffusive/reflective parts

TransLight

Enables easy/accurate defect detection deploying a unique backlight mechanism to illuminate transparent/semi-transparent web

100% Varnish/ColdSeal Inspection

Enables varnish or ColdSeal inspection

ProMIS

Enables bi-directional communication with MIS (ERP) systems in the print production environment for simple, quick and secured set-up processes

Label Inserter/Ejector Interface

Automatically triggers any marking/ejecting device to mark or eject defective area in the printed material

SpectraLab

In-line, ISO standard, dual-beam spectrophotometer measures color in dedicated color patches/targets and in image areas for absolute, accurate L*a*b*, Density, and Dot Gain measurement and enhanced reporting and real-time process control/alerting

Offline Setup

Remotely prepare jobs for inspection, based on digital PDF. Saves valuable time on press and ensures quality standards

AVT LTD.
6 Hanagar St. P.O.B. 7295
Hod-Hasharon 45241 Israel
Tel. +972 9 761 4444
Fax. +972 9 761 4555

AVT EMEA
Generaal Dewittelaan 9 Bus 3
2800 Mechelen, Belgium
Tel. + 32 15 56 0380
Fax: + 32 15 55 3997

AVT INC.
8601 Dunwoody Place
Bldg 100 Suite 100
Sandy Springs, GA 30350, USA
Tel. +1 770 541 9780
Fax. +1 770 541 9342

AVT Asia Pacific
6 Hanagar St. P.O.B. 7295
Hod-Hasharon 45241 Israel
Tel. + 972 9 761 4572
Fax. + 972 9 761 4501

AVT China (rep. office)
Room 808B,
Building No. 555
Nanjing Xilu
Shanghai 200041, China

AVT is trademark owned by AVT Ltd. AVT reserves the right to make changes to the specifications without prior notification.