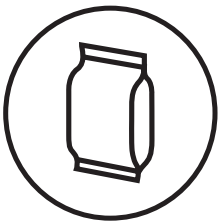


Argus E Turbo HD



Combination solution for 100% print inspection
with highest possible resolution viewing and
process control capabilities



Packaging

Argus E Turbo HD is a unique and cost effective combination of process control and print inspection in one robust system. It provides high resolution and performance at any given web width, with resolution ranging from 8K to 16K to guarantee superior quality of every print job!

100%

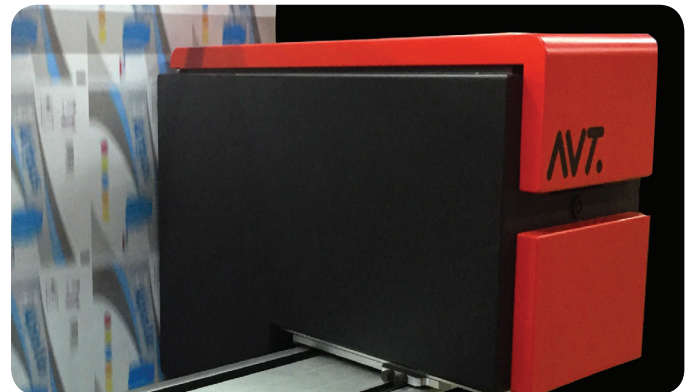
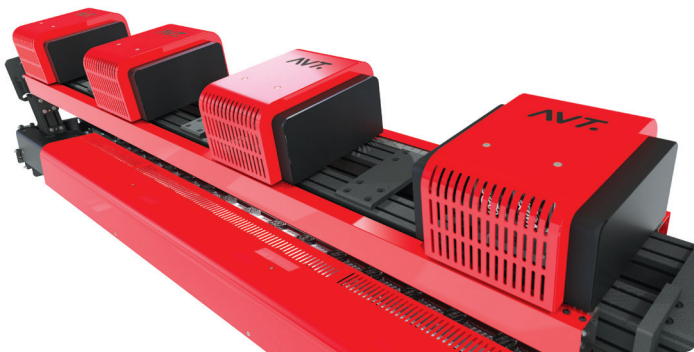
Quality Assurance and Process Control... all in one solution!

Today, over 50% of all high-end inspection and quality assurance systems installed are AVT platforms AVT proudly introduces Argus E Turbo HD, a unique combination of superior vision technologies to deliver the highest level of in-line process control and quality assurance on all your print jobs. The system combines 100% inspection at the highest possible speeds and high zoom viewing capabilities, coupled with optional features for press control, verification, detection and color measurement. The results speak for themselves - guaranteed print job quality, significant waste reduction, decreased production costs, and rapid return on investment (ROI).

Argus E Turbo HD efficiently detects a wide range of print and material defects, including color variations, doctor blade streaks, misprints, low contrast defects, mis-registration, spots and

splashes. The system detects both random and process print problems before they result in waste and customer rejection, visually indicating the position and type of defect detected.

Throughout the print process, random defects are automatically marked according to a selected quality threshold. When required, the system's high-resolution optical head is directed to the suspected defect location for further investigation. If a process defect is in question, operators can quickly and efficiently address the problem and correct the relevant source. At the end of each roll, the system generates a report citing defect locations, including precise defect images and its corresponding master. This detailed report enables intuitive tracing of the waste during the finishing process before sending the final print job to the customer.



Profit from Immediate Returns

- Ensure consistent print quality on every job
- Increase overall press productivity
- Gain rapid return on investment (ROI)
- Save valuable time with fast press set-up/ deployment
- Reduce waste, resources and production costs
- Prevent customer rejections

Unrivalled Print Quality

- Comprehensive 100% quality assurance and print process control
- Detection and alerts on wide range of print defects
- Locates/marks defects for analysis, archiving and reporting
- Presets system sensitivities for individual print jobs
- Supports all web press substrates/applications

Powerful Inspection Module

- Fully automated inspection process
- Intuitive user interface with easy on-line guide, minimizes job set-up
- Backed by dedicated smart algorithm engines
- Detects critical defects, while eliminating false alarms
- Categorizes defects according to type with easy on-screen view
- Indicates precise defect location on full repeat image
- Connects to print house ERP for seamless job download
- Easily upgradable software-driven platform

Production Workflow, Archiving & Reporting: Your Competitive Edge!

Argus E Turbo HD raises the bar on your on-press and post-press production workflow. Equipped with an innovative built-in PrintFlow module, the system effectively handles job and data archiving and reporting. An integral part of production workflow, operators use in-line reporting to review job/order/roll reports, edit and export final reports to digital files, or use the AVT WorkFlow Link to automatically connect to rewinders or slitters and efficiently remove defective material before

shipment. Quality reports with detailed defect images help operators identify problem areas, and more importantly, assist in the decision-making process to enhance overall production and deliver quality print jobs. The system's PrintFlow Manager collects relevant data from multiple systems, so that managers and key personnel can easily monitor, analyze and control production quality from their desktop PCs.



Streaks



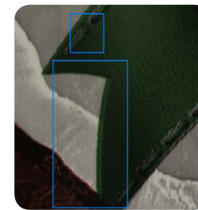
Foreign objects



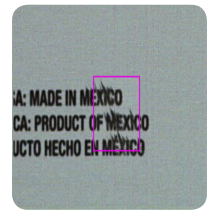
Spots & Splashes



Color variation



Mis-registration



text

Built-In System Features

- PrintFlow**
 Built-in module enables automatic job data archiving and SQL based roll and job reporting, including defect location, defect images and print quality statistics
- Regions of Interest (ROI)**
 Sets various sensitivities or profiles to different regions in the package; provides enhanced detection in important areas with reduced sensitivities in less critical areas.
- Inspection Profiles**
 Fast, easy generation for seamless set-up and improved control of quality standards
- Split Set-Up Mode for Press**
 Saves set-up time and material by performing part of set-up time while press is not running
- Quick Set**
 Fast, automatic “zero set-up” time for repeating jobs
- Good Material Count**
 Powerful, built-in, on-line monitoring of “good to ship” material, ensuring sufficient good material is printed prior to next job change



Simple, easy-to-use application



Optional Modules

ABCV

In-line, automatic barcode verification

IΔEal

In-line Delta E color measurements anywhere on the image, performed during and in parallel to print inspection, displays graphical view of color differences and reports statistics

Haze View

Provides unique viewing capabilities for hazing and low contrast defects

pRegister

Automatic register pre-set/control for CI Flexo press

Presco

Automatic plate and anilox pressure pre-set/control for CI Flexo press

PrintFlow Manager

Remote access to PrintFlow data of all installed PrintVision systems

PrintFlow Central

Central automatic storage of job data and roll reports; supports central backup of all data, enabling continuous availability of inspection data for PrintFlow Manager/Workflow Link

Digimask

Deploys PDF die-cut line to mask-out irrelevant area bordering the package

Workflow Link

Transfers quality data from the press to the rewinder for efficient removal of defective material; automatically stops rewinder at the defect location

ProMIS

Enables bi-directional communication with MIS (ERP) systems in the print production environment for simple, quick and secured set-up processes

TransLight

Backlight illumination for transparent material inspection

Reflective Support Module

Used for inspection of highly reflective materials, inks or foil

UV Viewing

Special optic head module enables viewing of VU sensitive inks and varnishes

100% Varnish Inspection (optional)

Allows varnish/coldseal detection

MasteRef

Master-to-master verification

JobRef

Job verification using original, customer-approved PDF file

RLT (Repeat Length Trend)

Enables monitoring/alerts on repeat trend changes

Label Inserter/Ejector Interface

Automatically triggers any marking/ejecting device to mark or eject defective area in the printed material

SpectraLab

In-line, ISO standard, dual-beam spectrophotometer measures color in dedicated color patches/targets and in image areas for absolute, accurate L*a*b*, Density, and Dot Gain measurement and enhanced reporting and real-time process control/alerting

Offline Setup

Remotely prepare jobs for inspection, based on digital PDF. Saves valuable time on press and ensures quality standards

AVT LTD.
6 Hanagar St. P.O.B. 7295
Hod-Hasharon 45241 Israel
Tel. +972 9 761 4444
Fax. +972 9 761 4555

AVT EMEA
Generaal Dewittelaan 9 Bus 3
2800 Mechelen, Belgium
Tel. + 32 15 56 0380
Fax: + 32 15 55 3997

AVT INC.
8601 Dunwoody Place
Bldg 100 Suite 100
Sandy Springs, GA 30350, USA
Tel. +1 770 541 9780
Fax. +1 770 541 9342

AVT Asia Pacific
6 Hanagar St. P.O.B. 7295
Hod-Hasharon 45241 Israel
Tel. + 972 9 761 4572
Fax. + 972 9 761 4501

AVT China (rep. office)
Room 808B,
Building No. 555
Nanjing Xilu
Shanghai 200041, China

AVT is trademark owned by AVT Ltd. AVT reserves the right to make changes to the specifications without prior notification.