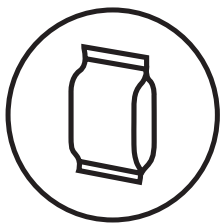


Argus Turbo HD

Combination Inspection Solution
for Process & Quality Control



Packaging

Argus Turbo HD, AVT's flagship system delivers a unique combination of automatic 100% print inspection and quality control. It decreases production time, automates manual processes and provides waste savings. Backed by AVT's pioneering vision technologies, Argus Turbo HD raises the bar on in-line process control and quality assurance by providing high resolution and performance at any given web width, with resolution ranging from 8K to 16K!

All the tools you need for **100%** quality assurance and process control!

Today, over 50% of all high-end inspection and quality assurance systems installed are AVT platforms. AVT's Argus Turbo HD is a fully automatic Quality Assurance and Process Control system designed to deliver unparalleled quality and control of all your print jobs.

To achieve high-quality results, the system combines two advanced sensing technologies: 100% inspection of the web 100% of the time at the highest possible speeds, while in parallel, an area-based camera zooms-in to inspect various locations of interest, at high-resolution. This unique combination results in superior coverage and process control in parallel.

To guarantee consistent print quality, the system visually inspects all types of print defects, including color variations, mis-registration, streaks, splashes, misprints and more. Argus Turbo HD visually indicates the position and type of defect, enabling operators to quickly address problem areas and

correct the relevant defect source. The system visually inspects all types of printed materials, including standard transparent and flexible substrates, identifying random and process print problems before they result in waste and customer rejection.

Both repeating and random defects are automatically marked according to selected quality thresholds, and if necessary, the high-resolution matrix camera is pointed to the suspected defect location for further investigation of the problem. A report is issued at the end of the roll showing the defect location, including images of the defect and its corresponding master. This enables intuitive tracing of the waste during the finishing process, before sending printed job to the customer.

AVT Process Control solutions suite ("Jupiter") can be easily upgraded to the Argus Turbo HD configuration.



Boost Your Productivity

- Ensure consistent print quality on every job
- Increase overall press productivity
- Gain rapid return on investment (ROI)
- Save valuable time with fast press set-up deployment
- Reduce waste, resources and production costs
- Prevent customer rejections

Unrivalled Print Quality

- Delivers 100% quality assurance and print process control
- Detection and alerts on a wide range of print defects
- Marks all defects for further analysis, archiving and reporting
- Presets system sensitivities for individual print jobs
- Supports all web press substrates/applications

Unique Print Inspection Process

- Fully automated inspection process
- Intuitive user interface with easy on-line guide, minimizes job set-up
- Detects critical defects, while eliminating false alarms
- Categorizes defects according to type with easy on-screen view
- Indicates precise defect location on full repeat image
- Connects to print house ERP for seamless job download
- Easily upgradable software-driven platform

Raising the Bar: Workflow, Archiving & Reporting

Argus Turbo HD raises the bar on your on-press and post-press production workflow. Equipped with an innovative built-in PrintFlow module, the system effectively handles job and data archiving and reporting. An integral part of production workflow, operators use in-line reporting to review job/order/roll reports, edit and export final reports to digital files, or use the AVT WorkFlow Link to automatically connect to rewinders or slitters and efficiently remove defective

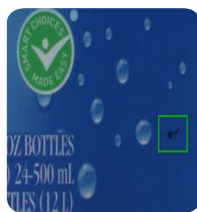
material prior to shipment. Quality reports with detailed defect images help operators identify problem areas, and more importantly, assist in the decision-making process to enhance overall production and deliver quality print jobs. The system's PrintFlow Manager collects relevant PrintFlow data from multiple systems, so that managers and key personnel can easily monitor, analyze and control production quality from their desktop PCs.



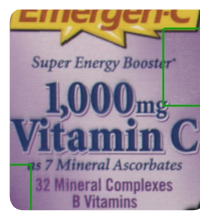
Streaks



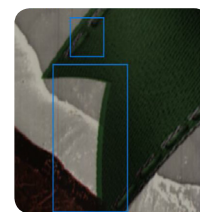
Foreign objects



Spots & Splashes



Color variation



Mis-registration



text

Built-In System Features

- PrintFlow**
 Built-in module enables automatic job data archiving and SQL based roll and job reporting, including defect location, defect images and print quality statistics
- Regions of Interest (ROI)**
 Sets various sensitivities/profiles to different package areas, providing enhanced detection in important areas, with reduced sensitivity in less critical areas
- Inspection Profiles**
 Fast, easy generation for seamless set-up and improved control of quality standards
- Split Set-Up Mode for Press**
 Saves set-up time and material by performing part of set-up time while press is not running
- Quick Set**
 Fast, automatic “zero set-up” time for repeating jobs
- Good Material Count**
 Powerful, built-in, on-line monitoring of “good to ship” material, ensuring sufficient good material is printed prior to next job change



Simple, easy-to-use application



The Printer's Choice |



Optional Modules

ABCV

In-line, automatic barcode verification

IΔEal

In-line Delta E color measurements anywhere on the image, performed during and in parallel to print inspection, displays graphical view of color differences and reports statistics

Hazing/Haze View

Hazing/low contrast detection and haze view provides unique viewing capabilities

pRegister

Automatic register pre-set/control for CI Flexo press

Presco

Automatic plate and anilox pressure; pre-set/control for CI Flexo press

RiteSeal

ColdSeal/varnish viewing and F/B register view

PrintFlow Manager

Remote access to PrintFlow data of all installed PrintVision systems

PrintFlow Central

Central automatic storage of job data and roll reports; supports central backup of all data, enabling continuous availability of inspection data for PrintFlow Manager/Workflow Link

Digimask

Deploys PDF die-cut line to mask-out irrelevant area bordering the package

WorkFlow Link

Transfers quality data from the press to the rewinder for efficient removal of defective material; automatically stops rewinder at the defect location

ProMIS

Enables bi-directional communication with MIS (ERP) systems in the print production environment for easy, quick and secured set-up processes

TransLight

Backlight illumination for transparent material inspection

Reflective Support Module

Used for printed reflective material

UV Viewing

Special optic head module enables viewing of VU sensitive inks and varnishes

100% Varnish Inspection (optional)

Allows varnish/coldseal detection

MasteRef

Master-to-master verification

JobRef

Job verification using original customer-approved PDF file

RLT (Repeat Length Trend)

Enables monitoring/alerts on repeat trend changes

Label Inserter/Ejector Interface:

Automatically triggers any marking/ejecting device to mark or eject defective area in the printed material

SpectraLab

In-line, ISO standard, dual-beam spectrophotometer measures color in dedicated color patches/targets and in image areas for absolute, accurate L*a*b*, Density, and Dot Gain measurement and enhanced reporting and real-time process control/alerting

Offline Setup

Remotely prepare jobs for inspection, based on digital PDF. Saves valuable time on press and ensures quality standards

AVT LTD.
6 Hanagar St. P.O.B. 7295
Hod-Hasharon 45241 Israel
Tel. +972 9 761 4444
Fax. +972 9 761 4555

AVT EMEA
Generaal Dewittelaan 9 Bus 3
2800 Mechelen, Belgium
Tel. + 32 15 56 0380
Fax: + 32 15 55 3997

AVT INC.
8601 Dunwoody Place
Bldg 100 Suite 100
Sandy Springs, GA 30350, USA
Tel. +1 770 541 9780
Fax. +1 770 541 9342

AVT Asia Pacific
6 Hanagar St. P.O.B. 7295
Hod-Hasharon 45241 Israel
Tel. + 972 9 761 4572
Fax. + 972 9 761 4501

AVT China (rep. office)
Room 808B,
Building No. 555
Nanjing Xilu
Shanghai 200041, China

AVT is trademark owned by AVT Ltd. AVT reserves the right to make changes to the specifications without prior notification.