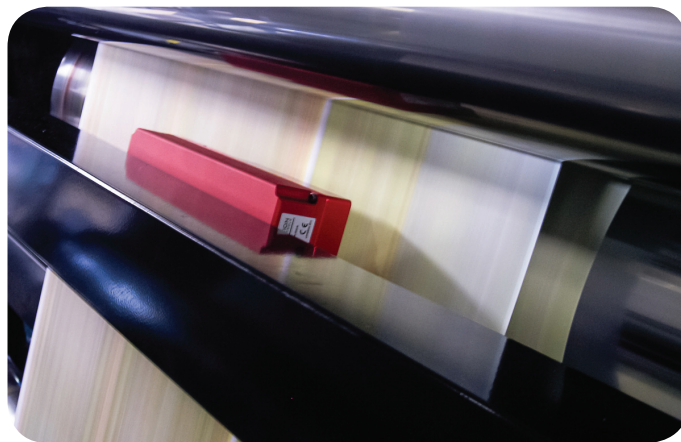


# SnapReg Register Control

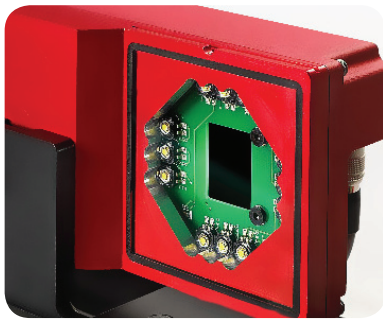
A color-to-color register solution that improves efficiency on any litho web, old or new

Today's digital camera technology can raise the speed and accuracy of virtually any legacy register system. More compact and more rugged, modern optics are less sensitive to paper dust, ink mist, and variation in paper shade. And modern LED illuminants are brighter, more stable, and longer-lasting than old-fashioned flash lamps. Now, upgrading closed-loop register to the newest capability doesn't have to involve a whole new press control system. SnapReg is the smarter solution - an optional upgrade, for any AVT Clarios or AVT Mercury platform. Physically and electronically adaptable, a SnapReg upgrade can be economically configured to suit virtually all web press models, without expensive web path changes or new operator control stations. Once installed, SnapReg will deliver shorter times to good register, reduced maintenance costs, and more accurate, reliable register.



**AVT.**



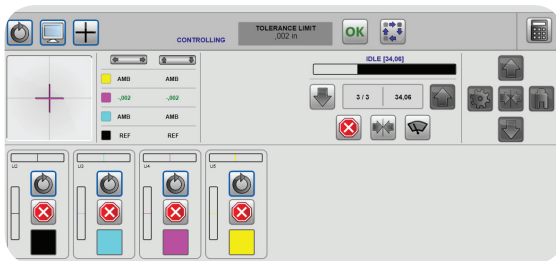
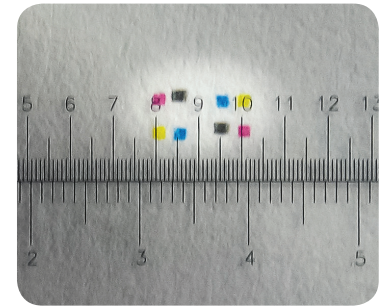


## Rugged, 21<sup>st</sup> century cameras

The SnapReg camera is compact. Its 32 fps frame rate enables accurate detection and control at web speeds as high as 18 meters/sec (over 3500 feet/m). The high-power LED illumination is built securely inside an EU IP4-rated housing. This advanced light source can automatically adjust its intensity according to paper shade and surface reflectance. So, SnapReg is ready to scan and control reliably even when challenged by today's widely varying paper types.

## Efficient micromark controls save paper

SnapReg uses nearly invisible micromarks to register up to 8 colors – any combination of special and process colors. These tiny marks can be as small as 0.2 mm each and are arranged in a target pattern as small as 4x4 mm (for 4 colors). The compact dimensions mean that the marks can be incorporated inside a Clarios colorbar. Or, can be placed virtually out of sight in a gutter or fold area.



## The newest, cost-saving register functions

A live camera view will appear, on command, with a simple tap on the control screen. For long runs, SnapReg supplies a "square dance" or anti-piling option. A quick touch of the controls starts a synchronized, imperceptible cycling of all colors' positions to help enhance blanket life and reduce piling.

## Space-saving installation minimizes expense

AVT engineered SnapReg to take full advantage of the investments our clients have already made in Clarios or Mercury. The compact cameras can usually be installed at the same place on the web where the legacy register system was located. So, costly changes to web paths are not necessary. Because SnapReg can share the workstations, and the host computers, used by Clarios or Mercury, an upgrade doesn't require adding extra screens or more computers.

## SnapReg is the printer's choice for the latest in full-featured register control

AVT LTD.  
6 Hanagar St. P.O.B. 7295  
Hod-Hasharon 45241 Israel  
Tel +972 9 761 4444  
Fax. +972 9 761 4555

AVT EMEA  
22A Donnersbergerstrasse  
Munich 80634, Germany  
Tel. +49 89 216 68 079  
Fax. +49 89 216 68 166

AVT INC.  
5910 Shiloh Rd. East  
(Suite 123), Alpharetta, GA  
30005, USA  
Tel. +1 770 541 9780  
Fax. +1 770 541 9342

AVT Asia Pacific  
6 Hanagar St. P.O.B. 7295  
Hod-Hasharon 45241 Israel  
Tel. + 972 9 761 4572  
Fax. + 972 9 761 4501

AVT China (rep. office)  
Room 808B, Building No.  
555  
Nanjing Xilu  
Shanghai 200041, China

AVT is trademark owned by AVT Ltd. AVT reserves the right to make changes to the specifications without prior notification.

[www.avt-inc.com](http://www.avt-inc.com)

The Printer's Choice

