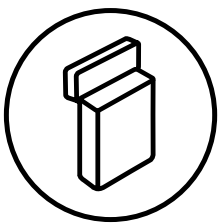


Titan



100% print inspection for metal
decorating applications



Metal Decorating

Ensure your print quality and reduce your total costs by installing a 100% automatic print inspection solution on your press.

With AVT, the market leader for print inspection and color control in the packaging market, you can gain more production time on your press by reducing the total set-up time of the press while matching the quality standards of the market and reducing the total production waste.



100% Inspection to fulfill market needs

Control the Process, Provide Excellent Quality and Reduce Costs

Titan provides 100% inspection of every print defect right on time, to better control the printing process, reduce waste and increase quality.

The Titan best in class quality assurance platform - ensures detection and traceability of every printed metal sheet. All important print production defects are detected and traced during the production stages. A uniquely flexible design supports any type of metal decorated sheets and any type of application. All of these functions, along with the easy upgrade abilities, maintain your investment and market competitiveness.

Global approach: any language and any information can be printed

Titan provides a PDF format comparison with your print in order to allow customers to be able to print variable information and to support production of different languages. No need to teach your operator new languages in order to avoid mistakes and to expand your business into new markets



100% quality assurance based on vast experience and thousands of installations

Years of research, development and experience have been invested in Titan to achieve the most advanced detection capabilities available on the market.

Backed by AVT's vast experience and leadership of over two decades in print inspection, Titan is based on top sensing technologies and intelligent algorithms nevertheless it is very easy to use.

Each defect is classified by type and presented on screen with its precise location indicated on the full metal sheet. The system identifies process problems that can be fixed by the operators as soon as they evolve, as well as eject and mark defective sheets automatically.

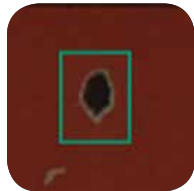
Advanced converting process defect detection

Gain a Competitive Edge - Every Step of the Way

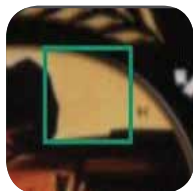
Defect detection in the early stages of the printing process



Scratches



Spots



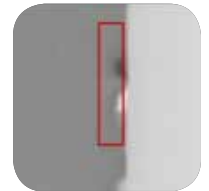
Color variations



Mis-Registrations



Scumming



Physical damage

Titan Benefits

- Enhanced printing quality
- Reduce waste and production costs
- Generate new business opportunities
- Guarantee your competitive advantage and leadership

Productivity Driven

- Printing defects are detected and shown on screen, immediately as they start to evolve
- Early warning of evolving defects enable the operator to react fast and fix the problem before production waste is created
- Defective sheets can be ejected automatically to the waste bin or diverted automatically for additional verification

PrintFlow Module - Built-In Archiving and Reporting

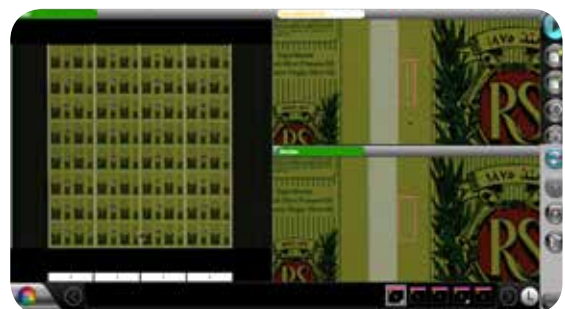
Titan is equipped with a built-in PrintFlow module that enables job and data archiving and reporting.

Detailed quality reports are generated for every printed job, with defect location, type, and defect images, to enable you to identify problematic areas in your production line, assist in the decision making process of creating quality products, and improve production.

Printflow Manager expands these capabilities adding remote quality data management for multiple systems and users, and allowing managers and key personnel to monitor, analyze and control the quality of production processes from the office's PC.



Ensure your color consistency



Simple, easy to use application

The Printer's Choice |



Optional Modules

Ejection and Marking Interface

Automatically triggers any ejecting or marking devices to flag defective sheets for diversion or for downstream removal, or to stop the press's feeder

JobRef

Enables verification at the set-up stage by automatically comparing the job to the original, customer approved digital PDF file

MasterRef

Enables printers to save the Master image of a job, which is then used to verify that the repeating jobs are identical to the original, thereby preventing production errors

IΔEal

In-line Delta E color measurements and monitoring ensure color consistency along the print run. Measurement of any location within the printed job, color bars or color patches, with clear indication of any color shift, trends and visual color comparison

Dual Mode Display

Dual monitor display enables large live image of the entire sheet on the right screen, while detection continues on the left screen

Offline Setup

Enables performing setup for AVT's inspection systems based on the job's PDF. The job data becomes continuously available to any inspection system connected to the Offline Setup PC

PrintFlow Manager

PrintFlow Manager is a quality data management system. It provides production & quality managers a remote access to all AVT PrintFlow reporting information from all 100% inspection platforms in the factory

PrintFlow Central

Central automatic storage of job data and reports; supports central backup of all data, enabling continuous availability of inspection data for PrintFlow Manager

PrintFlow Online

Provides online access to detection information anywhere along the printed stack while being printed and enhances the operators' defect study and analysis during the printing process

Digimask

Deploys PDF die-cut line to mask-out irrelevant areas surrounding the unit

AVT LTD.
6 Hanagar St. P.O.B. 7295
Hod-Hasharon 45241 Israel
Tel. +972 9 761 4444
Fax. +972 9 761 4555

AVT EMEA
Generaal Dewittelaan 9 Bus 3
2800 Mechelen, Belgium
Tel. + 32 15 56 0380
Fax: + 32 15 55 3997

AVT INC.
8601 Dunwoody Place
Bldg 100 Suite 100
Sandy Springs, GA 30350, USA
Tel. +1 770 541 9780
Fax. +1 770 541 9342

AVT Asia Pacific
6 Hanagar St. P.O.B. 7295
Hod-Hasharon 45241 Israel
Tel. + 972 9 761 4572
Fax. + 972 9 761 4501

AVT China (rep. office)
Room 808B,
Building No. 555
Nanjing Xilu
Shanghai 200041, China

AVT is trademark owned by AVT Ltd. AVT reserves the right to make changes to the specifications without prior notification.