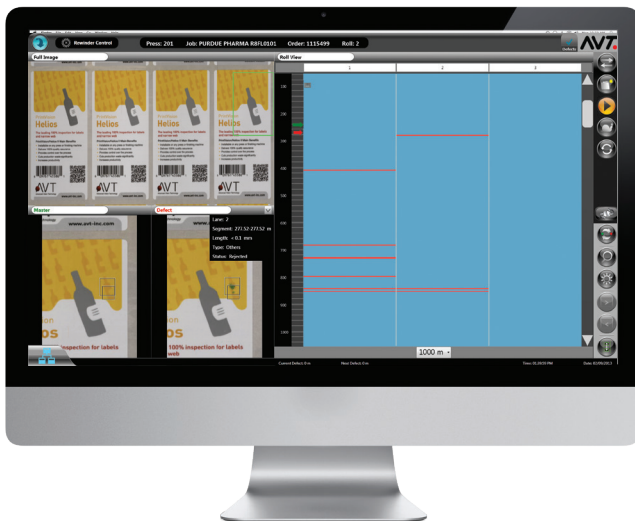


# WorkFlow Solutions

## WORKFLOW LINK

Your reliable connection between press and rewinder for efficient removal of defective material



WorkFlow Link is an optional add-on module for AVT 100% Automatic Inspection platforms. It provides remote access to PrintFlow data of all installed AVT 100% Inspection systems, and can be deployed in conjunction with the optional PrintFlow Manager, an innovative quality reporting management tool.

# WORKFLOW LINK: YOUR COMPETITIVE EDGE

Automatically stops the rewinder at defect location using inspection data from the press

## INSIDE THE PACKAGE

### 100% AIS on Press

An integral part of the workflow solution, 100% AIS (Automatic Inspection Systems) on press enables early detection of process defects. AIS enables operators to perform immediate corrective action to avoid printing waste. Ultimately, AIS on press prevents costly errors and re-prints and enhances overall productivity. What's more, all printing faults, including all random defects, are recorded for removal at the rewinder control station prior to delivering the final job to your customer.

### Boost Your Press/Rewinder Performance

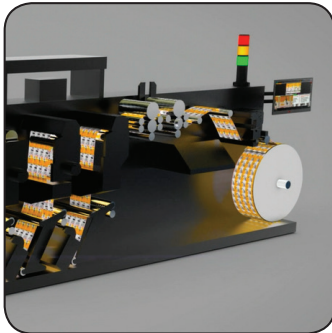
Adding AIS to the press results in increased production speed, while ensuring perfect print quality. Once deployed, Workflow Link increases finishing machine speed by eliminating the need to stop operation for every suspected defect. Operators can now allow machines to run at full capacity, automatically slowing down for real defects only.

### Rewinder Control Station

- Automatically controls/stops the rewinder based on data from the press
- Automatic identification of every roll
- Clear/concise graphical defect location map with color-coding indication
- Displays master/defect images for every detected fault

### Quality Assurance Just Got Better

PrintFlow data from multiple systems enable QA personnel to identify problem areas and assist in the decision-making process to enhance production and deliver quality jobs. Defect removal is now a quick and efficient process, ensuring that the rewinder runs at full speed and stops only on defects to be removed. The system's PrintFlow Manager collects relevant PrintFlow data so that managers and key personnel can monitor, analyze and control production quality directly from their PCs. Quality reports are generated and later used for statistical analysis to strengthen communications with your customers.



Automatic inspection on the printing press



PrintFlow Manager editing station (optional)



Rewinder station with WorkFlow Link

AVT LTD.  
6 Hanagar St. P.O.B. 7295  
Hod-Hasharon 45241 Israel  
Tel. +972 9 761 4444  
Fax. +972 9 761 4555

AVT EMEA  
Generaal Dewittelaan 9 Bus 3  
2800 Mechelen, Belgium  
Tel. + 32 15 56 0380  
Fax: + 32 15 55 3997

AVT INC.  
8601 Dunwoody Place  
Bldg 100 Suite 100  
Sandy Springs, GA 30350, USA  
Tel. +1 770 541 9780  
Fax. +1 770 541 9342

AVT Asia Pacific  
6 Hanagar St. P.O.B. 7295  
Hod-Hasharon 45241 Israel  
Tel. + 972 9 761 4572  
Fax. + 972 9 761 4501

AVT China (rep. office)  
Room 808B,  
Building No. 555  
Nanjing Xilu  
Shanghai 200041, China

AVT is trademark owned by AVT Ltd. AVT reserves the right to make changes to the specifications without prior notification.

[www.avt-inc.com](http://www.avt-inc.com)

The Printer's Choice |

